

WHITWORTH AGR-PUD (SOUTH) - PLAT FOUR

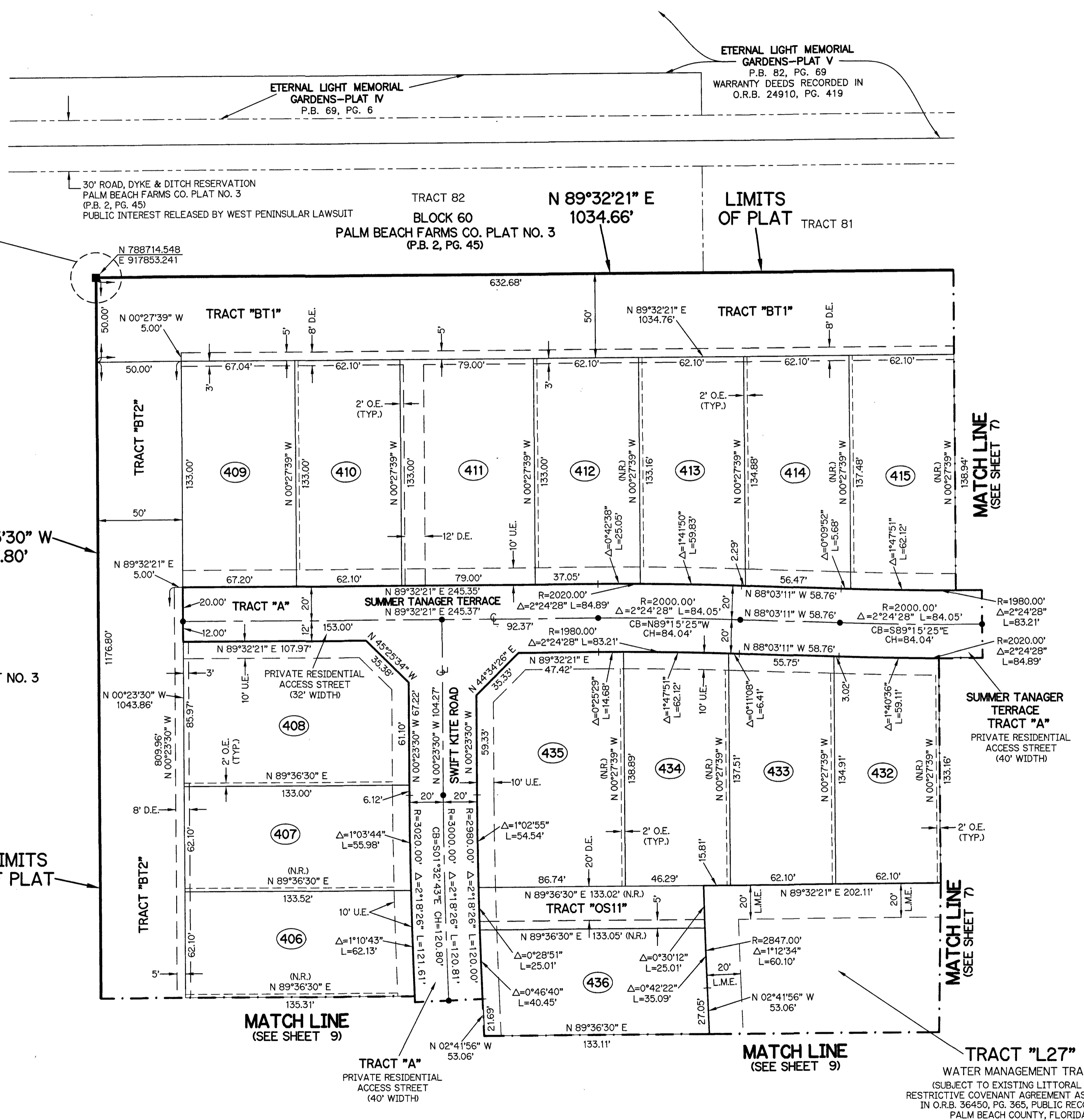
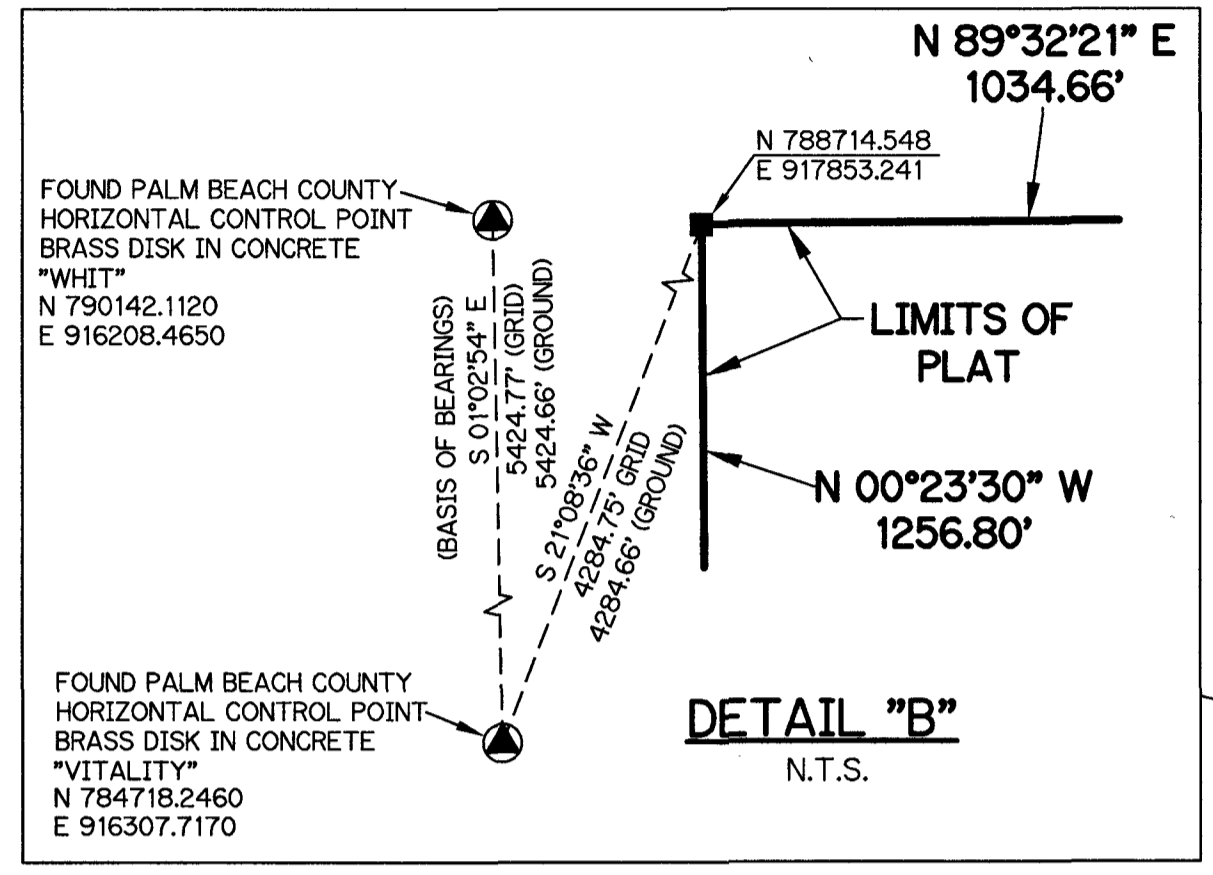
BEING ALL OF TRACTS 88 THROUGH 90, INCLUSIVE, AND A PORTION OF TRACTS 78 THROUGH 82, INCLUSIVE, TRACT 87, TRACT 91, AND A PORTION OF ROAD, DYKE AND DITCH RESERVATIONS 30 FEET IN WIDTH, WHICH ABUT SAID TRACTS, ALL LYING WITHIN BLOCK 60, PALM BEACH FARMS CO. PLAT NO. 3, ACCORDING TO THE PLAT THEREOF, AS RECORDED IN PLAT BOOK 2, PAGE 45, OF THE PUBLIC RECORDS OF PALM BEACH COUNTY, FLORIDA, LYING IN SECTION 31, TOWNSHIP 45 SOUTH, RANGE 42 EAST AND SECTION 6, TOWNSHIP 46 SOUTH, RANGE 42 EAST

SHEET 8 OF 10

59



SCALE: 1" = 40'

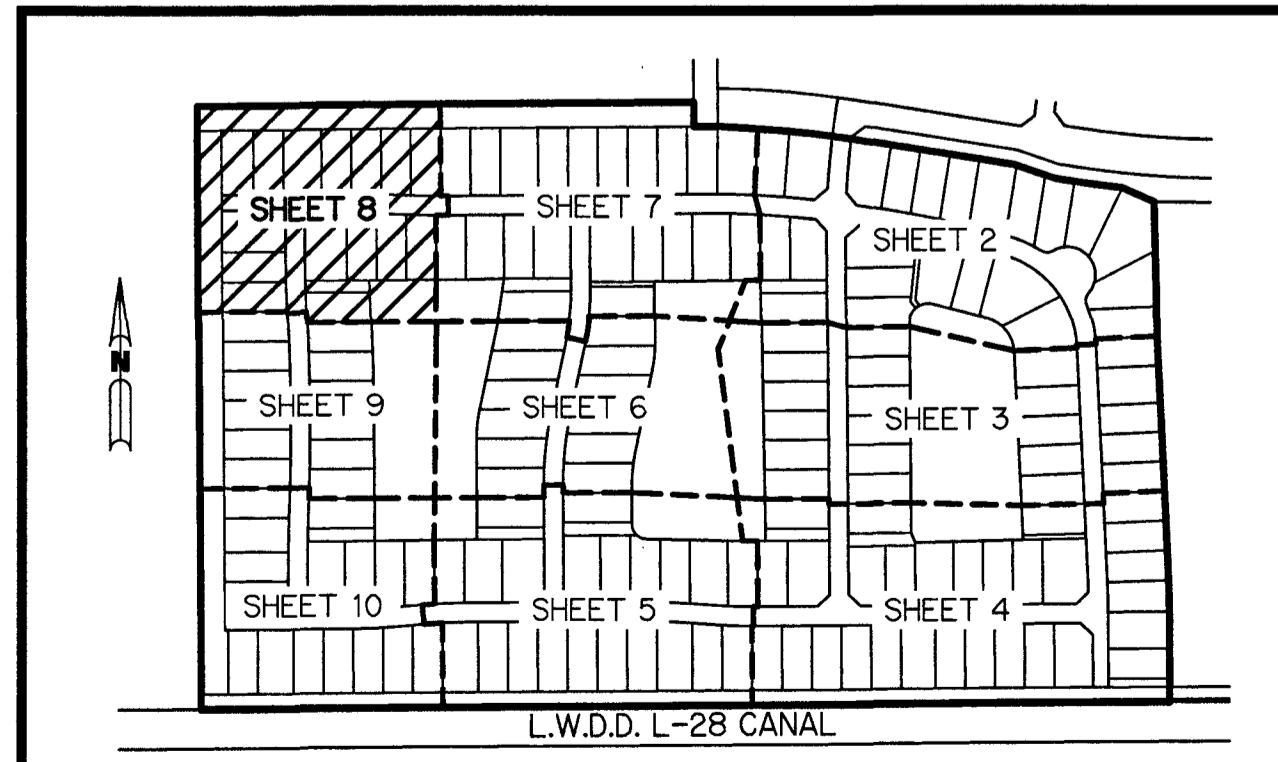


LEGEND:

▲	- SET PERMANENT REFERENCE MONUMENT 5/8" IRON ROD 1.5' IN LENGTH 1.4" CAP STAMPED PRM L.B. #7741	N.T.	- NON-TANGENT
△	- FOUND PERMANENT REFERENCE MONUMENT 5/8" IRON ROD 1.5' IN LENGTH 1.4" CAP STAMPED PRM L.B. #7741	N.T.S.	- NOT TO SCALE
■	- SET PERMANENT REFERENCE MONUMENT 4"X4" CONCRETE MONUMENT WITH 1.5" DISK STAMPED PRM L.B. #7741	O.R.B.	- OFFICIAL RECORD BOOK
□	- FOUND PERMANENT REFERENCE MONUMENT 4"X4" CONCRETE MONUMENT WITH 1.5" DISK STAMPED PRM L.B. #7741	O.E.	- MAINTENANCE & ROOF OVERHANG EASEMENT
●	- SET PERMANENT CONTROL POINT NAIL WITH 1.25" DISK STAMPED PCP L.B. #7741	P.B.C.	- PALM BEACH COUNTY
○	- FOUND PERMANENT CONTROL POINT NAIL WITH 1.25" DISK STAMPED PCP L.B. #7741	P.B.C.U.E.	- PALM BEACH COUNTY UTILITY EASEMENT
AGR	- AGRICULTURAL	P.B.	- PLAT BOOK
Δ	- DELTA ANGLE	P.C.	- POINT OF CURVATURE
B.T.	- BUFFER TRACT	P.C.C.	- POINT OF COMPOUND CURVATURE
BLK	- BLOCK	P.C.P.	- PERMANENT CONTROL POINT
CB	- CHORD BEARING	P.D.E.	- PUBLIC DRAINAGE EASEMENT
CH	- CHORD DISTANCE	PG.	- PAGE
C	- CENTERLINE	PGS.	- PAGES
D.B.	- DEED BOOK	P.O.B.	- POINT OF BEGINNING
D.E.	- PRIVATE DRAINAGE EASEMENT	P.N.I.	- POINT OF NON-RADIAL INTERSECTION
ESMT	- EASEMENT	P.N.T.I.	- POINT OF NON-TANGENT INTERSECTION
F.P.L.	- FLORIDA POWER & LIGHT	P.O.C.	- POINT OF COMMENCEMENT
L	- ARC LENGTH	P.O.I.	- POINT OF INTERSECTION
L.A.E.	- LIMITED ACCESS EASEMENT	P.R.C.	- POINT OF REVERSE CURVATURE
LB	- LICENSED BUSINESS	P.R.I.	- POINT OF RADIAL INTERSECTION
L.M.A.E.	- LAKE MAINTENANCE ACCESS EASEMENT	P.S.M.	- PROFESSIONAL SURVEYOR AND MAPPER
L.M.E.	- LAKE MAINTENANCE EASEMENT	P.T.	- POINT OF TANGENCY
L.W.D.D.	- LAKE WORTH DRAINAGE DISTRICT	PUD	- PLANNED UNIT DEVELOPMENT
N.R.	- NOT RADIAL	R	- RADIUS
N.R.T.R.	- NOT RADIAL TO REAR LINE	RAD	- RADIAL
		R/W	- RIGHT-OF-WAY
		R.D. & D.	- ROAD, DYKE AND DITCH RESERVATION
		SIRC	- SET 5/8" IRON ROD & CAP STAMPED "PRM LB7741"
		SN&D	- SET MAGNETIC NAIL & DISK STAMPED "PRM LB7741"
		S.T.	- SURVEY TIE
		TYP.	- TYPICAL
		U.E.	- UTILITY EASEMENT
		N=780000.00	- STATE PLANE COORDINATE VALUE
		E=930000.00	- STATE PLANE COORDINATE VALUE

NOTES:
 COORDINATES SHOWN ARE GRID COORDINATES DATUM = NAD 83 (1990 ADJUSTMENT)
 ZONE = FLORIDA EAST ZONE
 LINEAR UNIT = U.S. SURVEY FEET
 COORDINATE SYSTEM = 1983 STATE PLANE TRANSVERSE MERCATOR PROJECTION
 ALL DISTANCES ARE GROUND (UNLESS OTHERWISE NOTED)
 SCALE FACTOR = 1.00002026
 PLAT BEARING = GRID BEARING
 GROUND DISTANCE X SCALE FACTOR = GRID DISTANCE

THIS INSTRUMENT WAS PREPARED BY
 PERRY C. WHITE, P.S.M. 4213, STATE OF FLORIDA
 SAND & HILLS SURVEYING, INC.
 6675 E. CALUMET CIRCLE
 LAKE WORTH, FLORIDA 33467
 LB-7741



KEY MAP
N.T.S.

WHITWORTH AGR-PUD (SOUTH) - PLAT FOUR

SH0362

SHEET 8 OF 10